

INFRARED THERMOGRAPHY REPORT



Sample of Infrared

INSPECTED & REPORTED by

PT. LANCAR MAKMUR SEJAHTERA

Ruko Sentra Menteng Blok B7/MN 36 Sektor 7
Bintaro Jaya Tangerang 15224 Indonesia
Tel 6221-7454790; fax 6221-7454791
Email : lancarms@bit.net.id

CONTOH LAPORAN

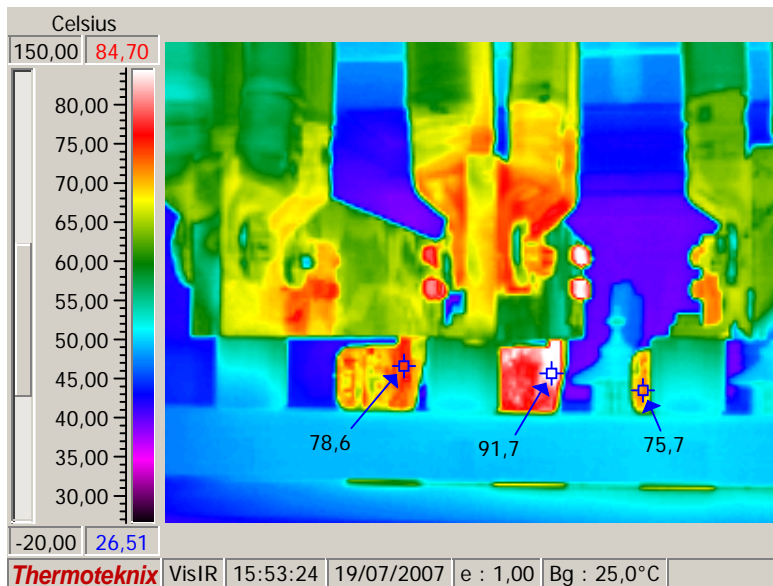
INFRARED THERMOGRAPHY REPORT

Visual Image



PHOTO NO.	01
DATE	19 JULY 2007
SUPERVISOR	BP. BUDIMAN SIMAMORA
LOCATION	ENERGY HOUSE ROOM
EQUIPMENT	TRAFO 1 PAUWELS 2000 KVA
OBJECT	BUSHING LV PHASE "R, S & T"
MADE BY	PT. LANCAR MAKMUR SEJAHTERA
CLIENT	CONTOH LAPORAN

Thermal Image



TEMPERATURE DATA (° C)	
HOT SPOT	91.7 ° C
TEMPERATURE REFERENCE	75.7 ° C
PERMITTED MAX. TEMPERATURE	70 ° C
CLASSIFICATION	D
CLASSIFICATION OF RISE IN TEMPERATURE FROM PERMITTED MAXIMUM TEMPERATURE	
A: ≤ MAX. TEMP.	NORMAL FOR DATA
B: ≥ 1°C - 10°C	NEED ATTENTION
C: ≥ 11°C - 20°C	REPAIR DURING NEXT MAINT. PERIOD
D: ≥ 21°C - 40°C	REPAIR AS SOON AS POSSIBLE
E: ≥ 41°C	REPAIR IMMEDIATELY

Probable Causes

		Comment / Suggestion
X	Bad Connection	TEMPERATUR KONEKSI BUSHING TINGGI LAKUKAN PENGETESAN DISOLVE GAS ANALISA GUNA MENGETAHUI KANDUNGAN GAS DALAM TRAFO DISEBABKAN KONEKSI INTERNAL TRAFO YANG TIDAK BAIK. KENCANGKAN KONEKSI BUSHING TRAFO TERSEBUT
	Overload	
	Unbalance Loaded	
X	Internal Component / Parts failure	
	Electromagnetic Induction	
	Normal Operating Temperature	

Client Supervisors Notes

CONTOH LAPORAN

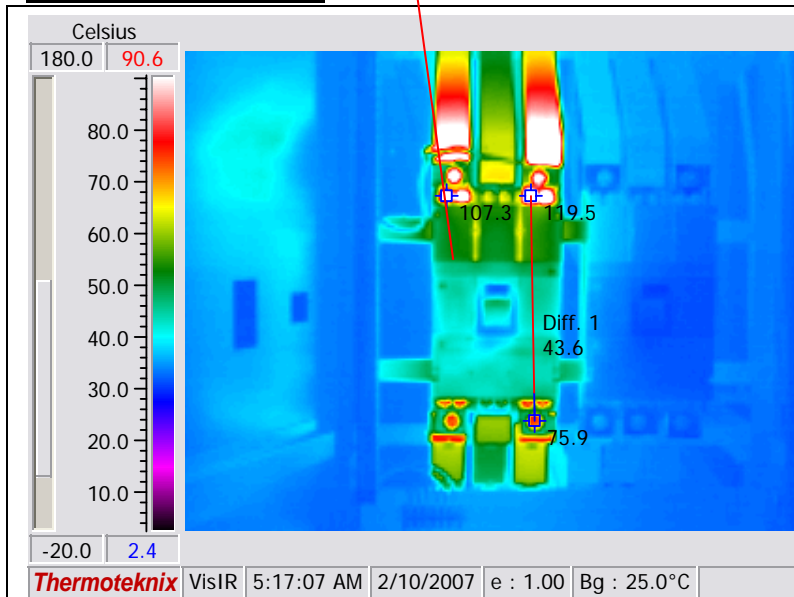
INFRARED THERMOGRAPHY REPORT

Visual Image



PHOTO NO.	02
DATE	9 FEBRUARI 2007
SUPERVISOR	BP. HAMZAH
LOCATION	CHILLER ROOM
EQUIPMENT	MCC-2 - PP. CHILLER 2
OBJECT	MCCB NO. 3
MADE BY	PT. LANCAR MAKMUR SEJAHTERA
CLIENT	CONTOH LAPORAN

Thermal Image



TEMPERATURE DATA (° C)	
HOT SPOT	119.5 ° C
TEMPERATURE REFFERENCE	75.9 ° C
PERMITTED MAX.TEMPERATURE	70 ° C
CLASSIFICATION	E
CLASSIFICATION OF RISE IN TEMPERATURE FROM PERMITTED MAXIMUM TEMPERATURE	
A: ≤ MAX. TEMP.	NORMAL FOR DATA
B: ≥ 1°C - 10°C	NEED ATTENTION
C: ≥ 11°C - 20°C	REPAIR DURING NEXT MAINT. PERIOD
D: ≥ 21°C - 40°C	REPAIR AS SOON AS POSSIBLE
E: ≥ 41°C	REPAIR IMMEDIATELY

Probable Causes

Probable Causes		Comment / Suggestion
X	Bad Connection	TERJADI KENAIKAN TEMPERATUR PADA MCCB DISEBABKAN KONTAK POINT MCCB KOTOR LAKUKAN KALIBRASI PADA PERALATAN TSB, JIKA PERLU GANTI DENGAN YANG BARU INSPEKSI ULANG 2 BULAN MENDATANG
	Overload	
	Unbalance Loaded	
X	Internal Component / Parts failure	
	Electromagnetic Induction	
	Normal Operating Temperature	

Client Supervisors Notes

CONTOH LAPORAN

INFRARED THERMOGRAPHY REPORT

Visual Image

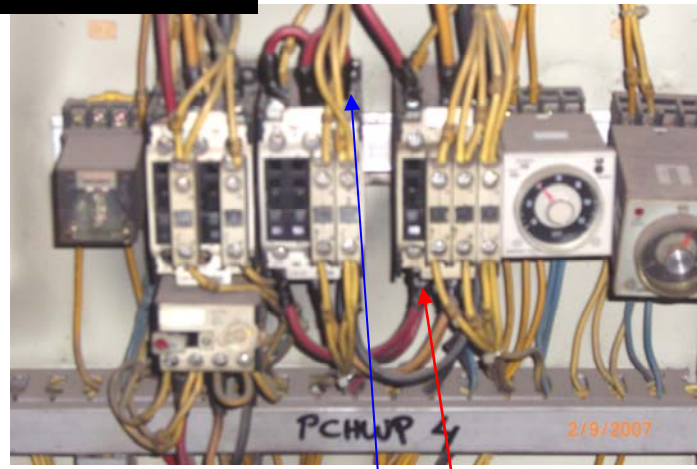
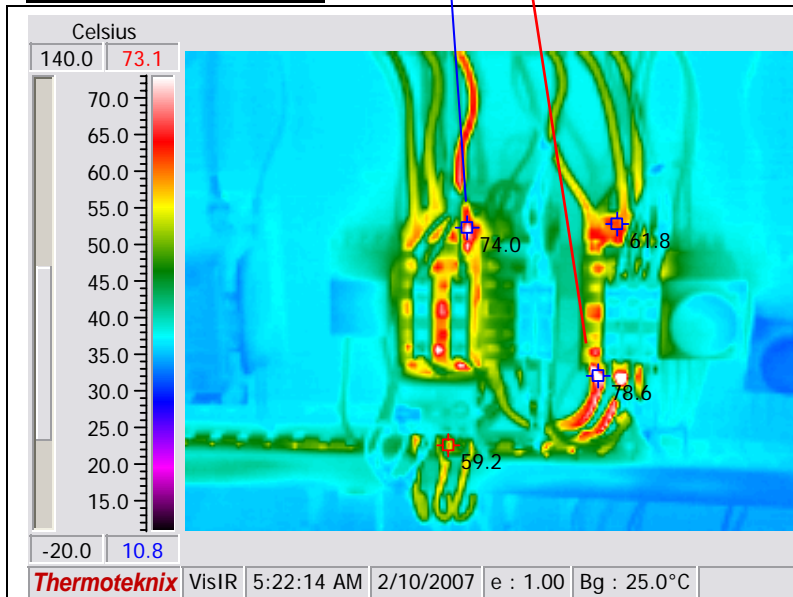


PHOTO NO.	03
DATE	10 FEBRUARI 2007
SUPERVISOR	BP. HAMZAH
LOCATION	CHILLER ROOM
EQUIPMENT	MCC-2 – OUTGOING 2 CT CH 3-4
OBJECT	KONTAKTOR CHWP 3
MADE BY	PT. LANCAR MAKMUR SEJAHTERA
CLIENT	CONTOH LAPORAN

Thermal Image



TEMPERATURE DATA (° C)	
HOT SPOT	78.6 ° C
TEMPERATURE REFERENCE	61.8 ° C
PERMITTED MAX. TEMPERATURE	60 ° C
CLASSIFICATION	C
CLASSIFICATION OF RISE IN TEMPERATURE FROM PERMITTED MAXIMUM TEMPERATURE	
A: ≤ MAX. TEMP.	NORMAL FOR DATA
B: ≥ 1°C - 10°C	NEED ATTENTION
C: ≥ 11°C - 20°C	REPAIR DURING NEXT MAINT. PERIOD
D: ≥ 21°C - 40°C	REPAIR AS SOON AS POSSIBLE
E: ≥ 41°C	REPAIR IMMEDIATELY

Probable Causes

X	Bad Connection	Comment / Suggestion
	Overload	BEBERAPA KONEKSI KABEL PADA KONTAKTOR TIDAK BAIK GANTI KABEL JUMPER KONTAKTOR DENGAN YANG BARU KENCANGKAN KONEKSI KABEL TSB. INSPEKSI ULANG 2 BULAN MENDATANG
	Unbalance Loaded	
	Internal Component / Parts failure	
	Electromagnetic Induction	
	Normal Operating Temperature	

Client Supervisors Notes

CONTOH LAPORAN

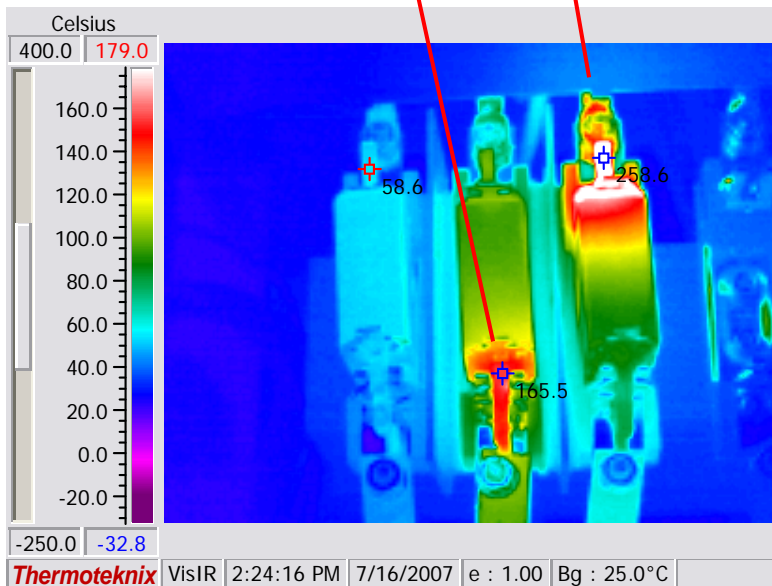
INFRARED THERMOGRAPHY REPORT

Visual Image



PHOTO NO.	04
DATE	16 JULY 2007
SUPERVISOR	BP. RUSTEN PURBA
LOCATION	RUANG CHILLER
EQUIPMENT	MCC-1 CAPASITOR BANK CELL 1
OBJECT	FUSE STEP 2
MADE BY	PT. LANCAR MAKMUR SEJAHTERA
CLIENT	CONTOH LAPORAN

Thermal Image



TEMPERATURE DATA (° C)	
HOT SPOT	258.6 ° C
TEMPERATURE REFFERENCE	58.6 ° C
PERMITTED MAX. TEMPERATURE	70 ° C
CLASSIFICATION	E
CLASSIFICATION OF RISE IN TEMPERATURE FROM PERMITTED MAXIMUM TEMPERATURE	
A: ≤ MAX. TEMP.	NORMAL FOR DATA
B: ≥ 1°C - 10°C	NEED ATTENTION
C: ≥ 11°C - 20°C	REPAIR DURING NEXT MAINT. PERIOD
D: ≥ 21°C - 40°C	REPAIR AS SOON AS POSSIBLE
E: ≥ 41°C	REPAIR IMMEDIATELY

Probable Causes

	Bad Connection	Comment / Suggestion
X	Overload	PENGAMAN LEBUR FUSE & PENJEPIT FUSE PHASE "S & T" SUDAH TIDAK BAIK GANTI FUSE & PENJEPIT FUSE DENGAN YANG BARU INSPEKSI ULANG 2 BULAN MENDATANG
	Unbalance Loaded	
X	Internal Component / Parts failure	
	Electromagnetic Induction	
	Normal Operating Temperature	

Client Supervisors Notes

CONTOH LAPORAN

INFRARED THERMOGRAPHY REPORT

Visual Image

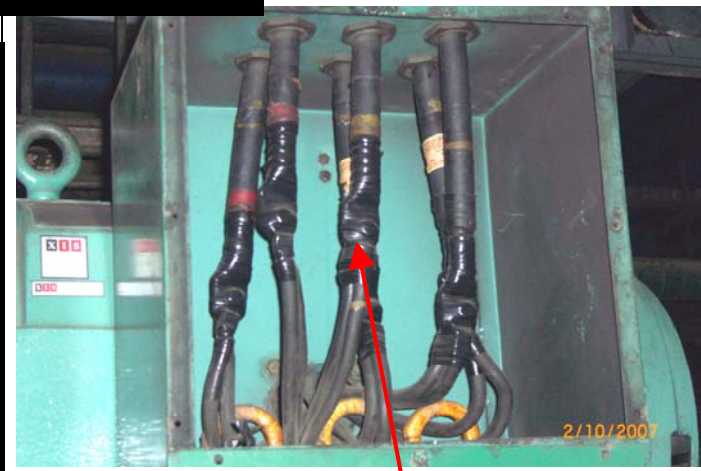
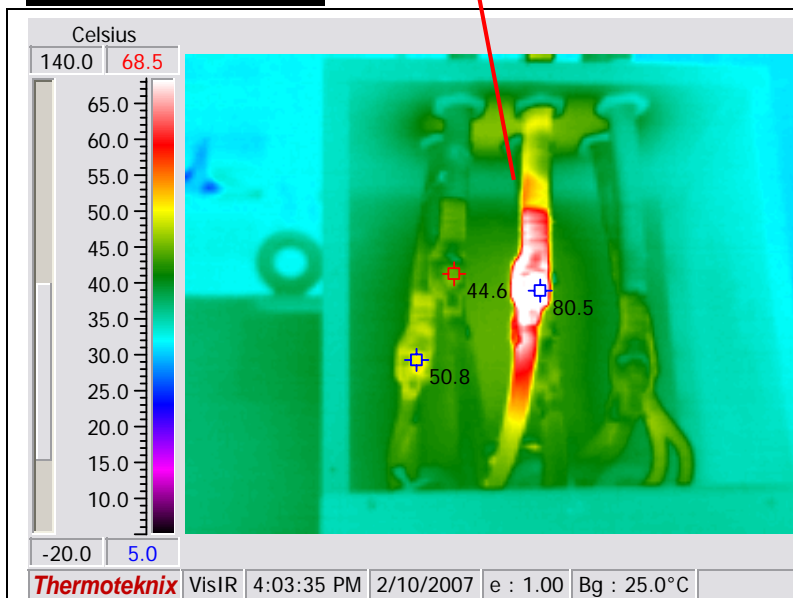


PHOTO NO.	05
DATE	10 FEBRUARI 2007
SUPERVISOR	BP. SISWANTO
LOCATION	RUANG CHILLER
EQUIPMENT	PANEL CHILLER UNIT 2
OBJECT	KABEL
MADE BY	PT. LANCAR MAKMUR SEJAHTERA
CLIENT	CONTOH LAPORAN

Thermal Image



TEMPERATURE DATA (° C)	
HOT SPOT	80.5 ° C
TEMPERATURE REFFERENCE	44.6 ° C
PERMITTED MAX.TEMPERATURE	60 ° C
CLASSIFICATION	C
CLASSIFICATION OF RISE IN TEMPERATURE FROM PERMITTED MAXIMUM TEMPERATURE	
A: ≤ MAX. TEMP.	NORMAL FOR DATA
B: ≥ 1°C - 10°C	NEED ATTENTION
C: ≥ 11°C - 20°C	REPAIR DURING NEXT MAINT. PERIOD
D: ≥ 21°C - 40°C	REPAIR AS SOON AS POSSIBLE
E: ≥ 41°C	REPAIR IMMEDIATELY

Probable Causes

X	Bad Connection	Comment / Suggestion
	Overload	KONEKSI SAMBUNGAN KABEL PHASE "S" TIDAK BAIK BUKA SAMBUNGAN KABEL, BERSIHKAN DAN KENCANGKAN KONEKSI TERSEBUT, JIKA PERLU GUNAKAN TERMINAL KABEL INSPEKSI ULANG 2 BULAN MENDATANG
	Unbalance Loaded	
	Internal Component / Parts failure	
	Electromagnetic Induction	
	Normal Operating Temperature	

Client Supervisors Notes